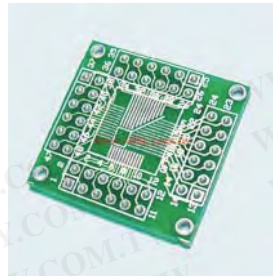




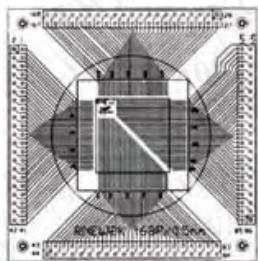
QFP to DIP 转接板

详细产品规格 - 请点击 cn.100y.com.tw



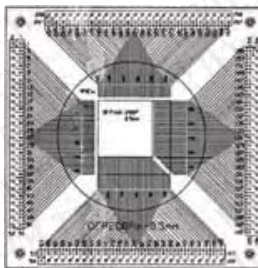
种类: QFP 0.5mm PITCH 转接板
 PINS: 48P
 适用IC包装: QFP 48PL 0.5mm
 规格: 27*29*1.0mm

100Y 编号	厂商编号	说明	Pins	适用 IC 包装	Size
14066	QFP48L	QFP 0.5mm PITCH 转接板	48P	QFP 48PL 0.5mm	27*29*1.6mm

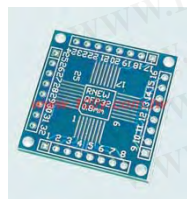


QFP168P 0.5mm转接板

100Y 编号	厂商编号	说明	Pins
7494	QFP168LC	QFP 0.5mm PITCH 转接板	168Pins



100Y 编号	厂商编号	说明	Pins
12788	QFP208L	QFP 0.5mm PITCH 转接板	208P
12789	QFP240L	QFP 0.5mm PITCH 转接板	240P

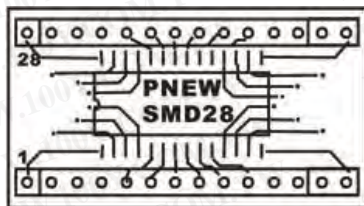
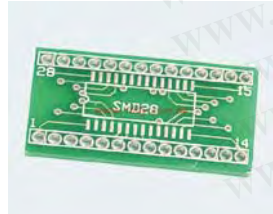


QFP(0.8mm Pitch)转接板

100Y 编号	厂商编号	说明	Pins
16469	QFP32N	QFP(0.8mm Pitch)转接板	32Pins

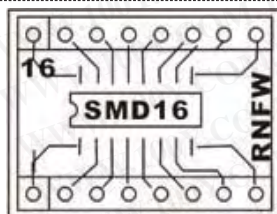
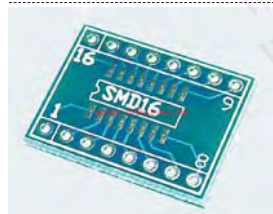
SOIC to DIP 转接板

详细产品规格 - 请点击 cn.100y.com.tw



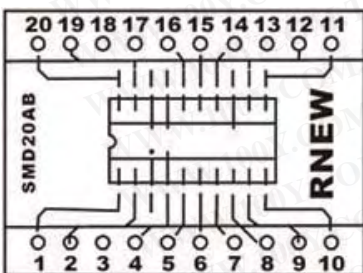
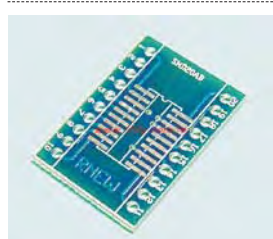
SOIC-DIP 1.27mm28B 转接板

100Y 编号	厂商编号	说明	Pins	Size
3992	RSMD-28B	SOIC-DIP 1.27mm 28B 转接板	28Pins	21*37*1.5mm



SOIC-DIP 1.27mm16pins 转接板

100Y 编号	厂商编号	说明	Pins	Size
3991	RSMD16	SOIC-DIP 1.27mm16pins 转接板	16Pins	21*19*1.0mm



SOIC-DIP 1.27mm20pins 转接板

100Y 编号	厂商编号	说明	Pins	Size
3995	RSMD20	SOIC-DIP1.27mm 20PINS 转接板	20Pins	21*28*1.5mm

