

继电器+电磁阀

其他_PCB继电器

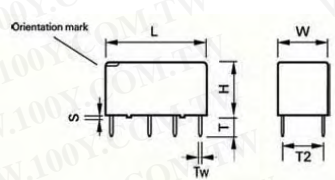
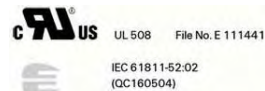
详细产品规格 - 请点击 cn.100y.com.tw

特点:

- 电信/ 信号继电器 (dry circuit, test access, ringing)
- Slim line 20 x 10 mm, 0.795 x 0.393 inch
- 开关电流为 2 A
- 2 转换触点 (2 form C / DPDT)
- 分支接点
- Meets FCC Part 68 and ITU-T K20

典型应用:

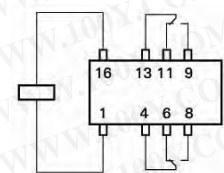
- 通讯器材
- 线卡应用- 类似物, ISDN, xDSL, PABX, Voice over IP
- 办公室和企业设备
- 测量和控制设备
- 家电
- 设置顶面箱, HiFi
- 医疗设备
- 汽车设备



THT		
	mm	inch
L	20.2 + 0.05 / - 0.02	0.795 + 0.002 / - 0.0008
W	10 + 0.05 / - 0.02	0.393 + 0.002 / - 0.0008
H	11 + 0.1 / - 0.2	0.433 + 0.004 / - 0.008
T	3.1 ± 0.3	0.122 ± 0.011
T1	N/A	N/A
T2	7.62 ± 0.15	0.3 ± 0.005
S	0.55	0.021
Tw	0.5	0.020

Contact Data

触点和型号数字	2 changeover contacts	
接点汇编	Bifurcated contacts	
接点材质	Silver-nickel, gold-covered	
在四周温度中最大限制直流	2 A	
最大开关电流	2 A	
最大开关电压	220 Vdc 250 Vac	
最大开关电容	60 W, 62.5 VA	
热电压	< 10 μV	
最小开关电压	100 μV	
除接触电阻/测量情况:	10 mA / 20 mV < 70 mΩ	
耐电	Contact application 0 (30 mV / 10 mA)	min. 5 x 10 ⁶ operations
	Cable load open end	min. 2.5 x 10 ⁵ operations
	Resistive load 150 V / 0.2 A - 30 W 24 V / 1.25 A - 30 W	min. 2.0 x 10 ⁵ operations min. 2.0 x 10 ⁵ operations
机械耐力	typ. 10 ³ operations	
UL 接点容量	220 Vdc / 0.24 A - 60 W 125 Vdc / 0.24 A - 30 W 250 Vac / 0.25 A - 62.5 VA 125 Vac / 0.5 A - 62.5 VA 30 Vdc / 2 A - 60 W	



Terminal assignment
Relay - top view

non-latching 1 coil
release condition

100Y 编号	厂商编号	说明	Type	Contact Arrangement	Contact Rating	Coil Voltage	Recognized Safety	Outline L*W*H
47073	C93401	AXICOM_Signal PCB Relay	non-latching, 1 coil	2 Form C, DPDT	1.25A	5VDC	UL, CSA	20.2*10*11
47075	C93402	AXICOM_Signal PCB Relay	non-latching, 1 coil	2 Form C, DPDT	1.25A	12VDC	UL, CSA	20.2*10*11
47076	C93403	AXICOM_Signal PCB Relay	non-latching, 1 coil	2 Form C, DPDT	1.25A	24VDC	UL, CSA	20.2*10*11

特点:

- 电信/ 信号继电器 (dry circuit, test access, ringing)
- Slim line 10 x 6 mm, 0.39 x 0.24 inch
- 低侧面 5.65 mm, 0.222 inch
- 最小木板空间 60 mm²
- 开关电流为 2 A
- 2 转换触点 (2 form C / DPDT)
- 分支接点, 镀金

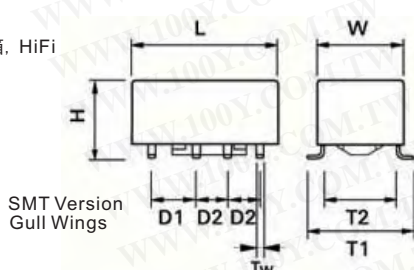
- 高敏感性导致低额定电力消耗
140 mW 为非阻塞标准
100 mW 为阻塞版本和非阻塞高敏感版本
- 超高敏感型 50 兆为非阻塞
- 高浪涌电容 (1.2/50 μs and 10/700 μs) meets Telcordia GR 1089, FCC Part 68 and ITU-T K20, 21, 45
≥ 1500 V between open contacts
≥ 2500 V between coil and contacts
- 高机械震动抵抗功能为 300 G, 残存为 500 G
- 密封 (RTV)

典型应用:

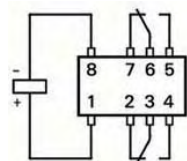
- 线卡应用- 类似物, ISDN, xDSL, PABX, Voice over IP
- 办公室和企业设备
- 测量和控制设备
- 家电, 设置顶面箱, HiFi
- 医疗设备

Contact Data

触点和型号数字	2 changeover contacts	
接点汇编	Bifurcated contacts	
在四周温度中最大限制直流	2 A	
最大开关电流	2 A	
最大开关电压	220 Vdc 250 Vac	
最大开关电容	60 W, 62.5 VA	
热电压	< 10 μV	
最小开关电压	100 μV	
除接触电阻/测量情况:	10 mA / 20 mV < 50 mΩ	
耐电	at contact application 0 (≤ 30 mV / ≥ 10 mA) cable load open end	min. 2.5 x 10 ⁵ operations
	at 125 Vdc / 0.24 A - 30 W	min. 2.0 x 10 ⁵ operations
	at 220 Vdc / 0.27 A - 60 W	min. 1 x 10 ⁵ operations
	at 250 Vac / 0.25 A - 62.5 VA	min. 1 x 10 ⁵ operations
	at 30 Vdc / 1 A - 30 W at 30 Vdc / 2 A - 60 W	min. 5 x 10 ⁵ operations min. 1 x 10 ⁵ operations
机械耐力	typ. 10 ⁵ operations	
UL 接点容量	220 Vdc / 0.24 A - 60 W 125 Vdc / 0.24 A - 30 W 250 Vac / 0.25 A - 62.5 VA 125 Vac / 0.5 A - 62.5 VA 30 Vdc / 2 A - 60 W	



SMT Version
Gull Wings



not energized condition
Non-latching type



100Y 编号	厂商编号	说明	Type	Contact Arrangement	Contact Rating	Coil Voltage	Recognized Safety	Outline L*W*H
47070	IM02G R	AXICOM_Signal PCB Relay	non-latching, 1 coil	2 Form C	2A 30VDC	4.5VDC	UL, CSA	10*6*5.65



服务专线: 台湾: 886-3-5753170
传 真: 台湾: 886-3-5753172
E-mail: 台湾: sale@100y.com.tw

深圳: 86-755-83298787
深圳: 86-755-83640655
深圳: 100y@163.com

上海: 86-21-34123367 & 54151736 29-128
上海: 86-21-64605107
上海: 100y-1@163.com