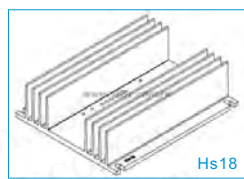


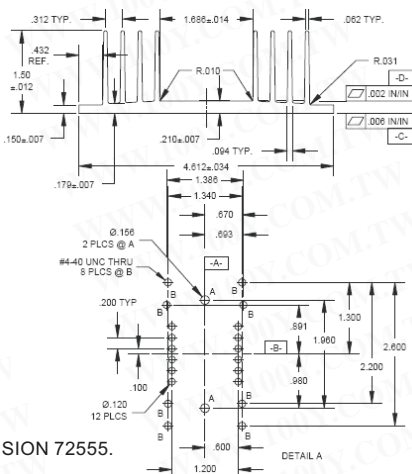


大型高热量用散热片

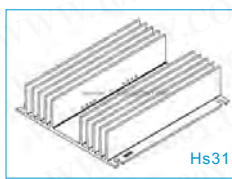
详细产品规格 - 请点击 cn.100y.com.tw



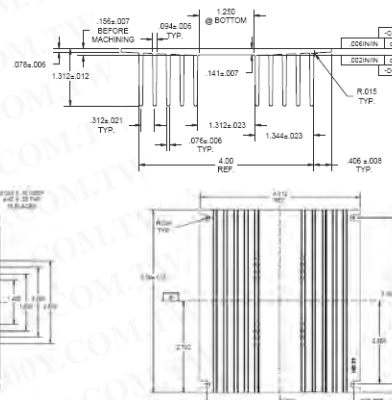
Hs18



NOTES:
 MADE FROM AAVID EXTRUSION 72555.
 FINISH: BLACK ANODIZE
 HOLE PATTERN IS HORIZONTALLY AND VERTICALLY CENTERED IN HEATSINK.
 ROSA = 1°C/W



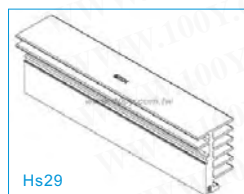
Hs31



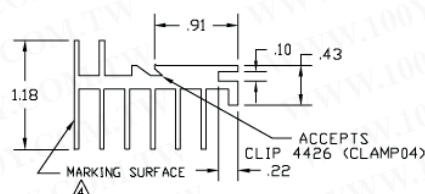
FITS PACKAGE STYLES: FC, FD, FE AND FF
 STANDARD COMMERCIAL EXTRUSION TOLERANCES APPLY
 REFER TO HS13 FOR EXACT DIMENSIONS
 MATERIAL: ALUMINUM ALLOY
 FINISH: BLACK ANODIZE
 THERMAL RESISTANCE: 1.48°C/W
 WEIGHT: 13.9 oz



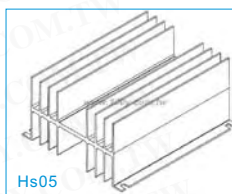
100Y 编号	厂商编号	制造厂商	说明
19993	HS18	APEX	散热片
19995	HS31	APEX	散热片



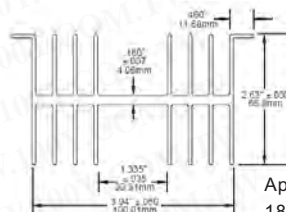
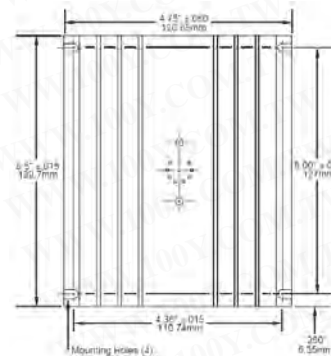
Hs29



NOTES:
 1. MADE FROM THERMALLOY EXTRUSION KM150-1
 2. FINISH TO BE BLACK ANODIZE PER MIL-A-8625, TYPE II, CLASS 2.
 For reference, typical breakdown volt age >300V
 3. Break all sharp edges, de-burr and remove all loose chips.
 Marking: HS29
 Mark with contrasting white ink or can be stamped.
 Do not mark part with rev. level
 5. Unless otherwise specified, All dimensions are in inches.



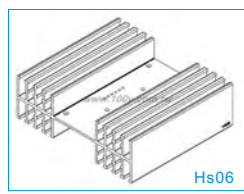
Hs05



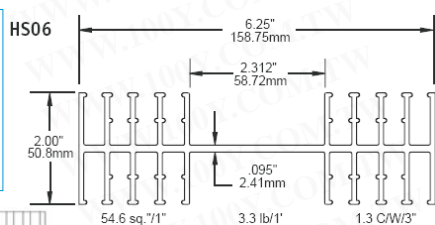
Approximate Weight: 18.3 oz



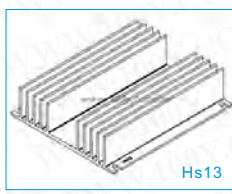
100Y 编号	厂商编号	制造厂商	说明
19966	HS05	APEX	散热片
20002	HS29	APEX	散热片



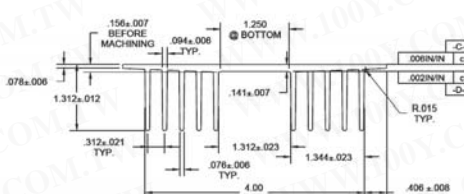
Hs06



Standard Commercial
 Extrusion Tolerances Apply
 Material: Aluminum Alloy
 Finish: Black Anodize
 Thermal Resistance: ≈ .96 C/W
 Approximate Weight: 19.8 oz



Hs13



FITS PACKAGE STYLE CE
 STANDARD COMMERCIAL EXTRUSION TOLERANCES APPLY
 REFER TO HS13 FOR EXACT DIMENSIONS
 MATERIAL: ALUMINUM ALLOY
 FINISH: BLACK ANODIZE
 THERMAL RESISTANCE: 1.48°C/W
 WEIGHT: 13.9 oz



100Y 编号	厂商编号	制造厂商	说明
19967	HS06	APEX	散热片
19970	HS13	APEX	散热片

