



中接管端子(全Nylon. Vinyl护套)

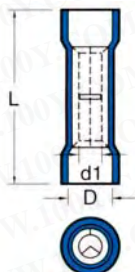
详细产品规格 - 请点击cn.100y.com.tw



**VINYL-INSULATED BUTT SPLICE CONNECTORS**  
**KST**  
 MAXIMUM ELECTRIC CURRENT:  
 22~16 A.W.G.: 10 AMPERE  
 16~14 A.W.G.: 15 AMPERE  
 12~10 A.W.G.: 24 AMPERE  
 MAXIMUM ELECTRICAL RATING: 75°C 300 VOLTS MAX.  
 CONNECTOR MATERIAL: BRASS  
 INSULATION MATERIAL: VINYL  
 INSULATION COLOR:  
 22-16 A.W.G.: RED  
 16-14 A.W.G.: BLUE  
 12-10 A.W.G.: YELLOW

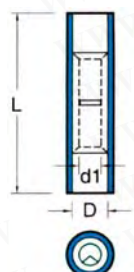


**NYLON-INSULATED STRAIGHT BUTT SPLICE CONNECTORS**  
**KST**  
 MAXIMUM ELECTRIC CURRENT:  
 26~22 A.W.G.: 9 AMPERE  
 22~16 A.W.G.: 19 AMPERE  
 16~14 A.W.G.: 27 AMPERE  
 12~10 A.W.G.: 48 AMPERE  
 MAXIMUM ELECTRICAL RATING: 105°C 600 VOLTS MAX.  
 CONNECTOR MATERIAL: COPPER  
 INSULATION MATERIAL: NYLON  
 INSULATION COLOR:  
 26-22 A.W.G.: YELLOW  
 22-16 A.W.G.: RED  
 16-14 A.W.G.: BLUE  
 12-10 A.W.G.: YELLOW



BVS1

| Wire range<br>A. W. G mm <sup>2</sup>   | ITEM NO | L             | DIMENSION<br>Inch mm<br>D d1 |             |  |
|---|---------|---------------|------------------------------|-------------|--|
| 22-16A. W. G.<br>0.5-1.5mm <sup>2</sup> | BVS 1   | .953<br>24.2  | .157<br>4.0                  | .067<br>1.7 |  |
| 16-14A. W. G.<br>1.5-2.5mm <sup>2</sup> | BVS 2   | .953<br>24.2  | .177<br>4.5                  | .091<br>2.3 |  |
| 12-10A. W. G.<br>4-6 mm <sup>2</sup>    | BVS 5   | 1.024<br>26.0 | .248<br>6.3                  | .134<br>3.4 |  |



BNY2

| Wire range<br>A. W. G mm <sup>2</sup>    | ITEM NO  | L             | DIMENSION<br>Inch mm<br>D d1 |             |  |
|--|----------|---------------|------------------------------|-------------|--|
| 26-22A. W. G.<br>0.2-0.5mm <sup>2</sup>  | BNYT 0.5 | .789<br>20.0  | .079<br>2.0                  | .051<br>1.3 |  |
| 22-16A. W. G.<br>0.5-1.5mm <sup>2</sup>  | BNYT 1   | 1.075<br>27.3 | .126<br>3.2                  | .067<br>1.7 |  |
| 16-14A. W. G.<br>1.5-2.5mm <sup>2</sup>  | BNYT 2   | 1.075<br>27.3 | .150<br>3.8                  | .091<br>2.3 |  |
| 12-10A. W. G.<br>4-6 mm <sup>2</sup>     | BNYT 5   | 1.075<br>27.3 | .209<br>5.3                  | .134<br>3.4 |  |
| 22-16A. W. G.<br>0.5-1.5 mm <sup>2</sup> | BNY 1    | 1.075<br>27.3 | .126<br>3.2                  | .067<br>1.7 |  |
| 16-14A. W. G.<br>1.5-2.5 mm <sup>2</sup> | BNY 2    | 1.075<br>27.3 | .150<br>3.8                  | .091<br>2.3 |  |
| 12-10A. W. G.<br>4-6 mm <sup>2</sup>     | BNY 5    | 1.075<br>27.3 | .209<br>5.3                  | .134<br>3.4 |  |

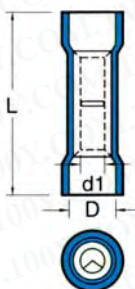
| 100Y 编号 | 厂商编号    | 制造厂商 | 说明          | 护套颜色 | 尺寸 L*d1*D      | 压接线径                  | Conn. Material | 耐温°C/Volt/A    | 护套材质  |
|---------|---------|------|-------------|------|----------------|-----------------------|----------------|----------------|-------|
| 6458    | BNY2    | KST  | Nylon 中接管端子 | 蓝色   | 27.3*2.3*3.8   | 16-14AWG(1.5-2.5mm2)  | Copper         | 105°C/600V/27A | Nylon |
| 6501    | BNYT0.5 | KST  | Nylon 中接管端子 | 黄色   | 20*1.3*2.0     | 26-22AWG(0.2-0.5mm2)  | Copper         | 105°C/600V/9A  | Nylon |
| 4274    | BVS1    | KST  | Vinyl 子弹双母  | Red  | 24.2*1.7*4mm   | 22-16AWG(0.5-1.5mm2)  | BRASS          | 75°C/300V/10A  | Vinyl |
| 7760    | BVS2    | KST  | Vinyl 双母连接头 | BLUE | 24.2*2.3*4.5mm | 16-14 AWG(1.5-2.5mm2) | Brass          | 75°C/300V/15A  | Vinyl |
| 11185   | BVS5    | KST  | Vinyl 双母连接头 | 黄色   | 26*3.4*6.3     | 12-10AWG(4-6mm2)      | Brass          | 75°C/300V/15A  | Vinyl |

中接管端子(PC护套)



BNITF1-CLEAR

**PC-INSULATED (FLARED) BUTT SPLICE CONNECTORS**  
**KST**  
 MAXIMUM ELECTRIC CURRENT:  
 22~16 A.W.G.: 19 AMPERE  
 16~14 A.W.G.: 27 AMPERE  
 12~10 A.W.G.: 48 AMPERE  
 MAXIMUM ELECTRICAL RATING: 125°C 600 VOLTS MAX.  
 CONNECTOR MATERIAL: COPPER  
 INSULATION MATERIAL: PC  
 INSULATION COLOR:  
 22-16 A.W.G.: RED  
 16-14 A.W.G.: BLUE  
 12-10 A.W.G.: YELLOW



| Wire range<br>A. W. G mm <sup>2</sup>    | ITEM NO | L             | DIMENSION<br>Inch mm<br>D d1 |             |  |
|--|---------|---------------|------------------------------|-------------|--|
| 22-16A. W. G.<br>0.5-1.5mm <sup>2</sup>  | BNITF 1 | .984<br>25.0  | .157<br>4.0                  | .067<br>1.7 |  |
| 16-14A. W. G.<br>1.5-2.5mm <sup>2</sup>  | BNITF 2 | .984<br>25.0  | .177<br>4.5                  | .091<br>2.3 |  |
| 12-10A. W. G.<br>4-6 mm <sup>2</sup>     | BNITF 5 | 1.063<br>27.0 | .248<br>6.3                  | .134<br>3.4 |  |
| 22-16A. W. G.<br>0.5-1.5 mm <sup>2</sup> | BNIF 1  | .984<br>25.0  | .157<br>4.0                  | .067<br>1.7 |  |
| 16-14A. W. G.<br>1.5-2.5 mm <sup>2</sup> | BNIF 2  | .984<br>25.0  | .177<br>4.5                  | .091<br>2.3 |  |
| 12-10A. W. G.<br>4-6 mm <sup>2</sup>     | BNIF 5  | 1.063<br>27.0 | .248<br>6.3                  | .134<br>3.4 |  |



BNITF2-CLEAR

| 100Y 编号 | 厂商编号         | 制造厂商 | 说明       | 护套颜色 | Size L*d1*D(mm) | 适用线径                 | Conn. Material | 耐温°C/Volt/A    |
|---------|--------------|------|----------|------|-----------------|----------------------|----------------|----------------|
| 6444    | BNITF1-CLEAR | KST  | 耐高温中接管端子 | 红色   | 25*1.7*4        | 22-16AWG(0.5-1.5mm2) | Copper         | 125°C/600V/19A |
| 37627   | BNITF2-CLEAR | KST  | 耐高温中接管端子 | 浅蓝   | 25*2.3*4.5      | 16-14AWG(1.5-2.5mm2) | Copper         | 125°C/600V/27A |

无护套中接管端子压线端子

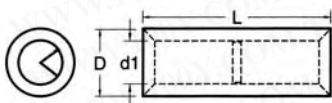
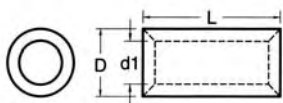
详细产品规格 - 请点击cn.100y.com.tw



**NON-INSULATED PARALLEL & BUTT CONNECTORS**  
**KST**  
 MATERIAL: COPPER TUBULAR

BNT-8  
BNT-2  
BNT-1

| Wire range<br>A. W. G mm <sup>2</sup>   | PARALLEL | ITEM NO      | BUTT   | L             | DIMENSION<br>Inch mm<br>D d1 T |             |              |
|---|----------|--------------|--------|---------------|--------------------------------|-------------|--------------|
| 26-22A. W. G.<br>0.2-0.5mm <sup>2</sup> | PNT0.5   | .197<br>5.0  | BNT0.5 | .472<br>12.0  | .083<br>2.1                    | .051<br>1.3 | .067<br>1.7  |
| 22-16A. W. G.<br>0.5-1.5mm <sup>2</sup> | PNT1     | .315<br>8.0  | BNT1   | .591<br>15.0  | .130<br>3.3                    | .067<br>1.7 | .031<br>0.8  |
| 16-14A. W. G.<br>1.5-2.5mm <sup>2</sup> | PNT2     | .315<br>8.0  | BNT2   | .591<br>15.0  | .154<br>3.9                    | .091<br>2.3 | .031<br>0.8  |
| 14-12A. W. G.<br>2.5-4mm <sup>2</sup>   | PNT3     | .335<br>8.5  | BNT3   | .591<br>15.0  | .197<br>5.0                    | .118<br>3.0 | .039<br>1.0  |
| 12-10A. W. G.<br>4-6 mm <sup>2</sup>    | PNT5     | .335<br>8.5  | BNT5   | .591<br>15.0  | .213<br>5.4                    | .134<br>3.4 | .039<br>1.0  |
| 8A. W. G.<br>8mm <sup>2</sup>           | PNT8     | .374<br>9.5  | BNT8   | .827<br>21.0  | .276<br>7.0                    | .177<br>4.6 | .047<br>1.2  |
| 6A. W. G.<br>14mm <sup>2</sup>          | PNT14    | .433<br>11.0 | BNT14  | 1.024<br>26.0 | .350<br>8.9                    | .232<br>5.9 | .059<br>1.5  |
| 4A. W. G.<br>22mm <sup>2</sup>          | PNT22    | .531<br>13.5 | BNT22  | 1.142<br>29.0 | .445<br>11.3                   | .307<br>7.8 | .069<br>1.75 |



| 100Y 编号 | 厂商编号  | 制造厂商 | 说明      | Conn. Material | 尺寸 L*d1*D  | 压接线径                 | Ampere |
|---------|-------|------|---------|----------------|------------|----------------------|--------|
| 7990    | BNT-1 | KST  | 无护套双母端子 | Copper Tubular | 15*1.7*3.3 | 22-16AWG(0.5-1.5mm2) | 19A    |
| 10031   | BNT-2 | KST  | 无护套双母端子 | Copper Tubular | 15*2.3*3.9 | 16-14AWG(1.5-2.5mm2) |        |
| 13928   | BNT-8 | KST  | 无护套双母端子 | Copper Tubular | 21*4.6*7mm | 8AWG(8mm2)           |        |

