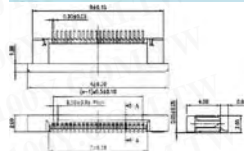




### FPC/FFC SMT90 下接式连接头



47326-0342010N  
**MATERIAL:**  
 Housing: LCP With GF. UL 94V-0.  
 Actuator: PPS With GF. UL 94V-0.  
 Contact: Phosphor Bronze.  
 Mounting Leg: Brass.  
**FINISH:**  
 Contact: Tin/Lead overNickel Palting.  
 Mounting Tab: Tin/Lead over Nickel Palting.  
**SPECIFICATION:**  
 Current Rating: 0.4A Max.  
 Voltage Rating: 50V Max.  
 Dielectric Withstanding Voltage: 200Volts AC.

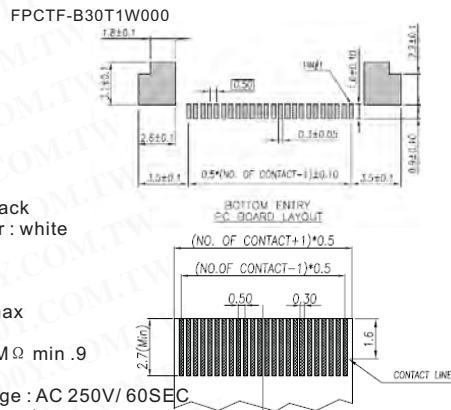


FPCTF-T50TTWC00  
**Specifications**  
 Housing material :  
 Nylon 6T UL94V-0/color: black  
 Slider : PPA UL94V-0/Color : white

### 详细产品规格 - 请点击cn.100y.com.tw



FPCTF-B30T1W000  
**Specifications**  
 Housing material :  
 Nylon 6T UL94V-0/color: black  
 Slider : PPA UL94V-0/Color : white  
**Electrical performance:**  
 Rated current : 0.5A  
 Rated voltage : 50VDC  
 Contact resistance : 30Ω max  
 (at 20mVDC,100mA max)  
 Insulation resistance : 100MΩ min .9  
 (at 500 VDC)  
 Dielectric withstanding voltage : AC 250V/ 60SEC  
 (leak current must be 1mA max)  
 Operating temperoutre :-30℃ to +85℃



100Y 编号	厂商编号	制造厂商	说明	类型	Contacts	Pitch (mm)
19721	47326-0342010N	TOP YANG	FPC-26 0.5 SMT-R/A 下接 R/A 下接-ZIF-管	SMT	26P	0.5
29273	FPCTF-B30T1W000	KINGFONT	0.5mm Pitch ZIF Mode Horizontal Type Top Entry	SMT 90°	30P-卧下接	0.5
38712	FPCTF-B32T1W000	KINGFONT	0.5mm Pitch ZIF Mode Horizontal Type Top Entry	SMT 90°	32P-卧下接	0.5
35713	FPCTF-B33T1W000	KINGFONT	0.5mm Pitch ZIF Mode Horizontal Type Top Entry	SMT 90°	33P-卧下接	0.5
29274	FPCTF-B50T1W000	KINGFONT	0.5mm Pitch ZIF Mode Horizontal Type Top Entry	SMT 90°	50P-卧下接	0.5
40505	FPCTF-B50TTWC00		0.5mm Pitch ZIF Mode Horizontal Type Top Entry	SMT 90°	50P-卧下接	0.5
40508	FPCTF-T50TTWC00		0.5mm Pitch ZIF Mode Horizontal Type Top Entry	SMT 90° 上	50P TOP ENTRY TUBE	0.5

### FPC/FFC 软排线



FFC-24P-0.5mm-220mmL  
**产品描述:**  
 绝缘材料: PVC  
 工作温度: 80 C , 105 C  
 工作电压: 30V, 60V, ...  
 耐燃测试: VW-1



FFC-26P-1.0mm-120mmL  
**产品描述:**  
 绝缘材料: PVC  
 工作温度: 80 C , 105 C  
 工作电压: 30V, 60V, ...  
 耐燃测试: VW-1

100Y 编号	厂商编号	说明	类型	Contacts	Pitch/Length (mm)
17131	FFC-16P-1.0mm-220mmL	软盘排线 80C/30V	F.F.C. AWM 2896	16P	1.0/220mm
17132	FFC-20P-1.0mm-220mmL	软盘排线 80C/30V	F.F.C. AWM 2896	20P	1.0/220mm
36449	FFC-20P-1.0mm-400mmL	软盘排线	F.F.C. AWM 2896	20P	1.0/400mm
39458	FFC-20P-1.0mm-500mmL	软盘排线	F.F.C. AWM 2896	20P	1.0/500mm
17129	FFC-24P-0.5mm-220mmL	软盘排线 80C/60V	F.F.C. AWM 2896	24P(正/反)	0.5/220mm
17128	FFC-24P-0.5mm-250mmL	软盘排线 80C/60V	F.F.C. AWM 2896	24P	0.5/250mm
22757	FFC-24P-0.5mm-350mmL	软盘排线 80C/30V	F.F.C. AWM 2896	24P	1.0/360mm
20485	FFC-26P-1.0mm-120mmL	软盘排线 80C/30V	F.F.C. AWM 2896	16P	1.0/120mm
23307	FFC-30P-0.5mm-100mmL	软盘排线 80C/30V	F.F.C. AWM 2896	30P	1.0/100mm
17127	FFC-30P-0.5mm-250mmL	软盘排线 80C/60V	F.F.C. AWM 2896	30P	0.5/250mm
28831	FFC-50P-0.5mm-200mmL	软盘排线 80C/60V	F.F.C. AWM 2896	50P	0.5/200mm
17130	FFC-50P-0.5mm-200mmL	软盘排线 80C/60V	F.F.C. AWM 2896	50P(正/反)	0.5/200mm
15920	HV4*030A03000MM	软盘排线	FFC (软性排线)	30P	1.25mm

### DVI I型-连接头/座 DVI 插板式连接头

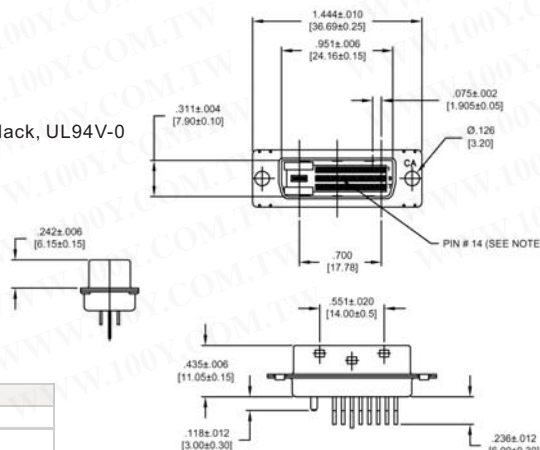


CA-24DVIPI-A



CA-29DVIPI-A

**SPECIFICATIONS**  
 Meets:DDWG's DVI specification  
**ENVIRONMENTAL**  
 Temperature Range:-20°C to +85°C  
**MECHANICAL**  
 Insulator Material:Glass-filled thermoplastic,black, UL94V-0  
 Shell Material:Steel  
 Contact Material: Brass  
 Contact Plating: Gold Flash  
**ELECTRICAL**  
 Current Rating: 1.5 AMP  
 Insulation Resistance:1000 Megohms Min.  
 Dielectric Withstanding:500V AC (rms)  
 Contact Resistance:20 Milliohms max  
 Consult factory for additional plating options



100Y 编号	厂商编号	说明	角度	公、母座	Pins
13962	CA-24DVIPI-A	DVI 插板式连接头	180°	公座	24P
13963	CA-29DVIPI-A	DVI 插板式连接头	180°	公座	29P

### 详细产品规格 - 请点击cn.100y.com.tw

