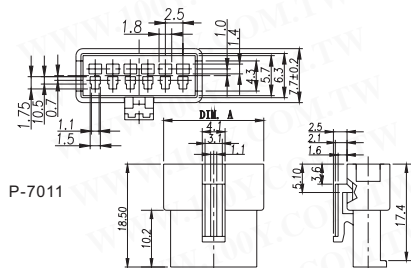




### 7011, 7012系列公头/母头和端子



#### TERMINAL

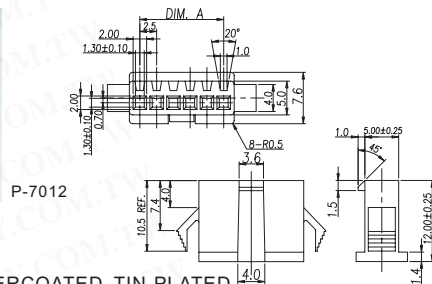
- MATERIAL: 0.2T BRASS
- PLATING: COPPER-UNDERCOATED, TIN-PLATED,
- WIRE RANGE: SUITABLE FOR AWG #22-#26

#### HOUSING

- MATERIAL: NYLON 66, UL 94V-0, V-2
- PITCH: 2.5(.098")
- POST: BRASS, 0.64 (.025") SQUARE PIN
- CIRCUITS: 2-18
- RECEPTACLE HOUSING MATES WITH PT 7011
- PLUG HOUSING MATES WITH PT 7012



### 详细产品规格 - 请点击cn.100y.com.tw

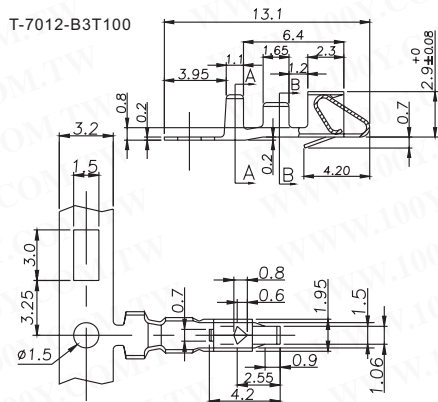


#### TERMINAL

- MATERIAL: 0.2T BRASS
- PLATING: COPPER-UNDERCOATED, TIN-PLATED,
- WIRE RANGE: SUITABLE FOR AWG #22-#26

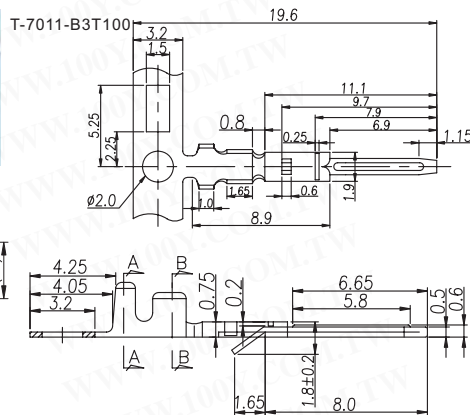
#### HOUSING

- MATERIAL: NYLON 66, UL 94V-0, V-2
- PITCH: 2.5(.098")
- POST: BRASS, 0.64 (.025") SQUARE PIN
- CIRCUITS: 2-18
- RECEPTACLE HOUSING MATES WITH PT 7011
- PLUG HOUSING MATES WITH PT 7012



#### NOTES:

- MATERIAL: BRASS
- FINISH : TIN PLATED
- WIRE GAUGE AWG : 22-28



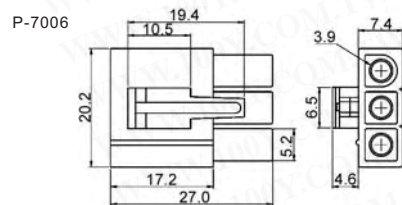
#### NOTES:

- MATERIAL: C2680-H
- FINISH : TIN PLATED
- WIRE GAUGE AWG : 22-26

100Y 编号	厂商编号	说明	插脚	公头/母头	Pitch	接收端/YES	插入端/YES	Packing
27769	P-7011-N2B10200	7011RH 母头	2P	母头	2.5mm	YES	NO	
16918	P-7011-N2B10300	7011RH 母头	3P	母头	2.5mm	YES	NO	
14245	P-7011-N2B10400	7011RH 母头	4P	母头	2.5mm	YES	NO	
14246	P-7011-N2B10600	7011RH 母头	6P	母头	2.5mm	YES	NO	
28678	P-7011-N2B10800	7011RH 母头	8P	母头	2.5mm	YES	NO	
27770	P-7012-N2B10200	7012PH 公头	2P	公头	2.5mm		YES	
27771	P-7012-N2B10300	7012PH 公头	3P	公头	2.5mm		YES	
14248	P-7012-N2B10400	7012PH 公头	4P	公头	2.5mm		YES	
14249	P-7012-N2B10600	7012PH 公头	6P	公头	2.5mm		YES	
28679	P-7012-N2B10800	7012PH 公头	8P	公头	2.5mm		YES	
14247	T-7011-B3T100	7011RH 端子						10,000PCS/R
14250	T-7012-B3T100	7012PH 端子						6,000PCS/R

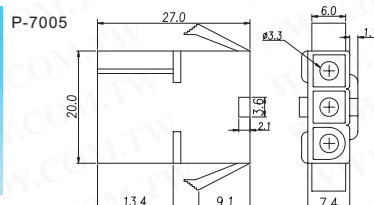
### 2.0 φ 7006 公/7005 公/母接头和端子

### 详细产品规格 - 请点击cn.100y.com.tw



#### SPECIFICATIONS:

- CURRENT RATING: 15AAC, DC MAX
- VOLTAGE RATING: 300V AC, DC
- TEMPERATURE RANGE: -25°C TO +90°C
- CONTACT RESISTANCE: INITIAL VALUE/10mΩ MAX.
- INSULATION RESISTANCE: 1000MΩ MIN.
- WITHSTANDING VOLTAGE: 1500V AC/MINUTE



#### TERMINAL

- MATERIAL: 0.25T BRASS
- PLATING: COPPER-UNDERCOATED, TIN-PLATED
- WIRE RANGE: SUITABLE FOR AWG #16-26

#### HOUSING

- MATERIAL: NYLON 66, UL 94V-0, V-2
- PITCH: 6.2 (.244")
- CIRCUITS: 1, 2, 3, 4, 6, 9, 12, 15
- PLUG HOUSING MATES WITH PT 7006
- RECEPTACLE HOUSING MATES WITH PT 7005

100Y 编号	厂商编号	说明	插脚	接收端/YES	插入端/YES
2358	G05-01P	公接头 2.0 φ	1P	NO	YES
2315	G05-02P	7006-2P 公接头 Pitch:6.2mm	2	NO	YES
2357	G05-03P	7006-3P 公接头 2.0 φ Pitch:6.2mm	3P	NO	YES
2316	G05-04P	7006-4P Pitch:6.2mm	4P	NO	YES

