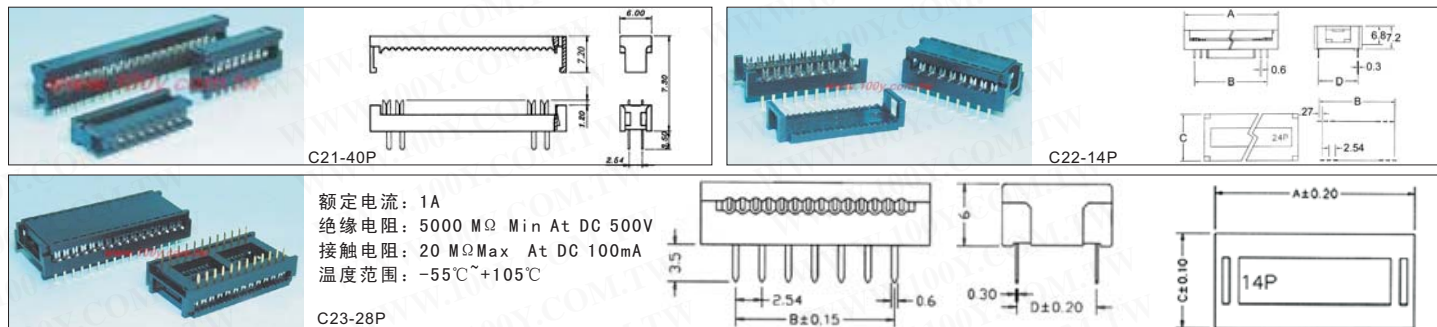




2. 54mm 压接排线的DIP IDC头



Material:

Housing: 30% Glass filled PBT UL94V~0
 Plating: Selective gold plated: gold plated on mating area and nickel plated on wire cutting area
 Gold plated: 2u" over 50u" nickel
 Cable: 1.27mm (0.050") pitch flat cable

Contacts: Brass or Phosphor Bronze
 Tin plated: 100u" over 50u" nickel

Features:

Fast connection of flat cable to PC board.
 Recommended 28AWG 1.27mm(0.05") flat cable.
 Plug directly into 2.54mmX2.54mm PC board.

100Y 编号	厂商编号	说明	Contacts	宽度(inch)
5787	C21-10P	压排 IC 座	10P	0.1*0.1
8741	C21-14P	压排 IC 座	14P	0.1*0.1
8742	C21-16P	压排 IC 座	16P	0.1*0.1
8743	C21-20P	压排 IC 座	20P	0.1*0.1
8745	C21-24P	压排 IC 座	24P	0.1*0.1
8744	C21-26P	压排 IC 座	26P	0.1*0.1
8746	C21-30P	压排 IC 座	30P	0.1*0.1
5972	C21-34P	压排 IC 座	34P	0.1*0.1
8747	C21-40P	压排 IC 座	40P	0.1*0.1
3813	C22-10P	压排 IC 座	10P	0.1*0.3
7823	C22-14P	压排 IC 座	14P	0.1*0.3
4198	C22-16P	压排 IC 座	16P	0.1*0.3
4205	C22-18P	压排 IC 座	18P	0.1*0.3
4201	C22-20P	压排 IC 座	20P	0.1*0.3
4200	C23-24P	压排 IC 座	24P	0.1*0.6
4204	C23-28P	压排 IC 座	28P	0.1*0.6
4203	C23-32P	压排 IC 座	32P	0.1*0.6
4202	C23-40P	压排 IC 座	40P	0.1*0.6

压接排线的工具



卷压高度从6MM到27.5MM
 (最大宽度55MM)

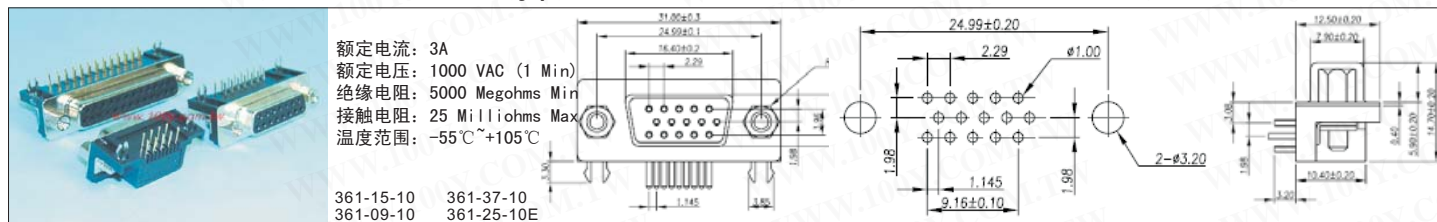
详细产品规格 - 请点击 cn.100y.com.tw

HT-214: FOR CRIMPING IDC-TYPE OF CONNECTORS ON TO RIBBON CABLE.
 CRIMPING FROM HEIGHT 6mm DISTANCE TO 27.5mm
 (MAX. 55mm WIDTH)

100Y 编号	厂商编号	说明
7578	HT-214	压接排线钳

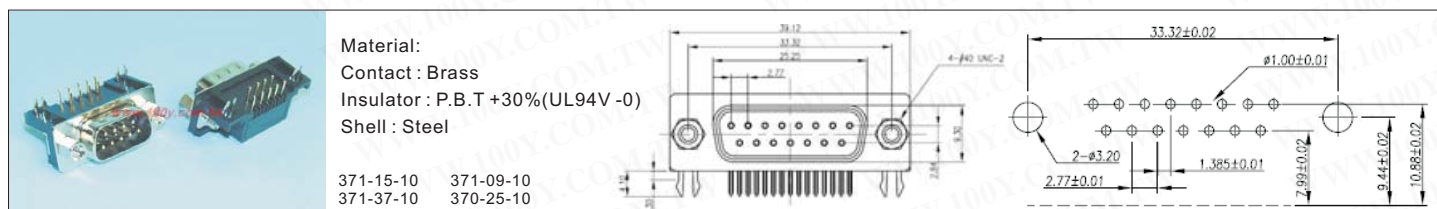
D型头/座+外壳+工具

D-Type 插板式 90



额定电流: 3A
 额定电压: 1000 VAC (1 Min)
 绝缘电阻: 5000 Megohms Min
 接触电阻: 25 Milliohms Max
 温度范围: -55°C~+105°C

361-15-10 361-37-10
 361-09-10 361-25-10E



Material:
 Contact : Brass
 Insulator : P.B.T +30%(UL94V -0)
 Shell : Steel

371-15-10 371-09-10
 371-37-10 370-25-10

100Y 编号	厂商编号	说明
3363	361-09-10	D 型插板式/母座 9P
3364	361-15-10	D 型插板式/母座 15P
1934	361-25-10E	D 型插板式/母座 25P
1987	361-37-10	D 型插板式/母座 37P
1936	370-25-10	D 型插板式/公座 25P
3365	371-09-10	D 型插板式 90°公座 9P
3366	371-15-10	D 型插板式/公座 15P
3323	371-37-10	D 型插板式 37P 公座

