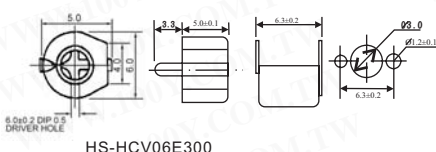




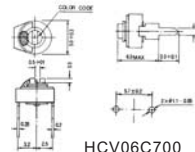
可调电容

Mini-Size 陶瓷可调电容

详细产品规格 - 请点击 cn.100y.com.tw



HS-HCV06E300

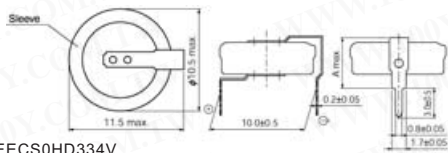


HCV06C700

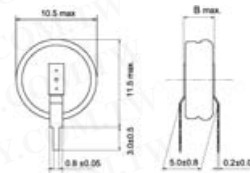
100Y 编号	厂商编号	说明	最大值	最小值	电压	颜色
38945	HCV 06 A050	全陶式可调电容	5.0pF	2.0pF	100Vdc	Blue
38949	HCV06C100	全陶式可调电容	10.0pF	3.0pF	100Vdc	White
38950	HCV06C200	全陶式可调电容	20.0pF	5.0pF	100Vdc	RED
38951	HCV06C300	全陶式可调电容	30pF	6.5pF	100Vdc	GREEN
38952	HCV06C400	全陶式可调电容	40.0pF	7.0pF	100Vdc	yellow
38953	HCV06C500	全陶式可调电容	50.0pF	10.0pF	100Vdc	Brown
38954	HCV06C600	全陶式可调电容	60.0pF	12.0pF	100Vdc	Brown
38955	HCV06C700	全陶式可调电容	70.0pF	15.0pF	100Vdc	Brown
40098	HS-HCV06E300	可调电容(半陶)	30pF	6.5pF	100Vdc	Green
13185	HS-HCV06E300	可调电容(半陶)	30pF	6.5pF	100Vdc	Green
9533	HSE-HV05A0501	全陶式可调电容	5pF	2pF	100Vdc	White
9531	HSE-HV05C100	全陶式可调电容	10pF	3pF	100Vdc	White
38944	KW-CV06C200	可调电容(半陶)	20.0pF	5.0pF	100Vdc	RED
9558	KW-CV06C200	半陶式可调电容	20pF	4.8pF	100Vdc	White

金电容

Panasonic_SD 系列金电容



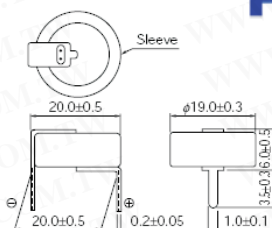
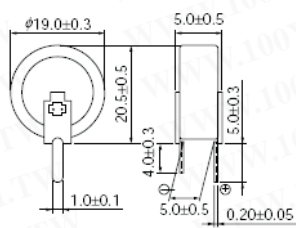
EECS0HD334V



EECS0HD224H

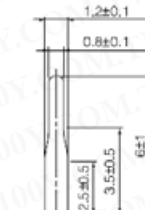
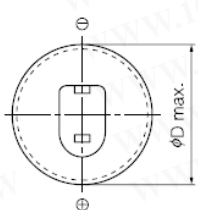
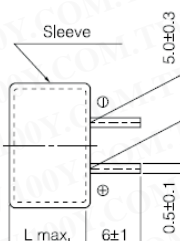
100Y 编号	厂商编号	制造厂商	说明	电容量(F)	V.DC	H*Dia	Cap. Range (F)	Lead Pitch(mm)
18589	EECS0HD104V	Panasonic	Psnasonic_金电容	0.10F	5.5V	11.5*5mm	0.080 to 0.180F	5mm
20127	EECS0HD223H	Panasonic	Psnasonic_金电容	0.022F	5.5V	11.5*5.5mm	0.0176 to 0.0396F	10mm
18587	EECS0HD223V	Panasonic	Psnasonic_金电容	0.022F	5.5V	11.5*5mm	0.0176 to 0.0396F	5mm
20128	EECS0HD224H	Panasonic	Psnasonic_金电容	0.22F	5.5V	11.5*5.5mm	0.176 to 0.396F	10mm
18590	EECS0HD224V	Panasonic	Psnasonic_金电容	0.22F	5.5V	11.5*5mm	0.176 to 0.396F	5mm
18591	EECS0HD334V	Panasonic	Psnasonic_金电容	0.33F	5.5V	11.5*5mm	0.264 to 0.594F	5mm
18588	EECS0HD473V	Panasonic	Psnasonic_金电容	0.047F	5.5V	11.5*5mm	0.0376 to 0.0846F	5mm

Panasonic_SG 系列金电容



100Y 编号	厂商编号	制造厂商	说明	H*Dia	V.DC	电容量(F)	Cap. Range (F)	Lead Pitch(mm)
18593	EECS5R5V105	Panasonic	Psnasonic_金电容	20.5*19.0*5.0mm	5.5V	1.0F	0.80 to 1.80F	5mm
18594	EECS5R5V155	Panasonic	Psnasonic_金电容	20.5*5.0mm	5.5V	1.5F	1.20 to 2.70F	5mm
18592	EECS5R5V474	Panasonic	Psnasonic_金电容	20.5*5.0mm	5.5V	0.47F	0.376 to 1.41F	5mm

Panasonic_F 系列金电容



100Y 编号	厂商编号	制造厂商	说明	H*Dia	V.DC	电容量(F)	Cap. Range (F)	Lead Pitch(mm)
18596	EECF5R5H104	Panasonic	金电容	9.5*13.5mm	5.5V	0.10F	0.080 to 0.180F	5mm
18599	EECF5R5H105	Panasonic	金电容	9.5*21.5mm	5.5V	1.00F	0.80 to 1.80F	5mm
18595	EECF5R5H473	Panasonic	金电容	6*13.5mm	5.5V	0.047F	0.0376 to 0.0846F	5mm
18597	EECF5R5H474	Panasonic	金电容	9.5*21.5mm	5.5V	0.47F	0.376 to 0.846F	5mm
18598	EECF5R5H684	Panasonic	金电容	9.5*21.5mm	5.5V	0.68F	0.476 to 1.224F	5mm

